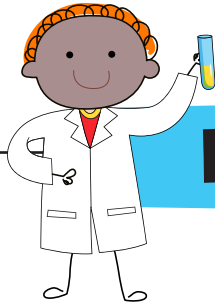




Name ..... Date .....



## How Do Stems Work?

Let's test how stems work by doing this investigation.

### Gather your equipment:



A glass



Water

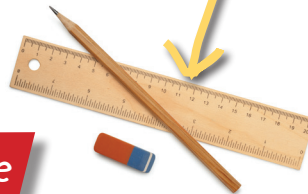


A stick of celery with leaves

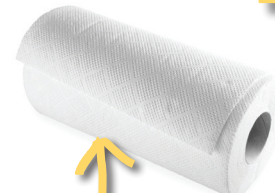


Red food colouring

pencil and ruler



A teaspoon



Kitchen roll

An adult helper with a knife

1. Pour about 3 cm of water into the glass.
2. Stir two teaspoons of red food colouring into the water.
3. Ask an adult to cut 1 cm from the end of the celery stick that has no leaves.
4. Stand the cut end of the celery in the red water.





Name ..... Date .....

---

**What do you think will happen? Write down your ideas.**

.....

.....

.....

**5.** Leave the celery overnight, and then check it the next day.

**What do you think has happened? Write down your observations and ideas.**

.....

.....

.....

**6.** Place some kitchen towel on your work surface to catch any drips. Remove the celery stem from the water and look at the cut end.

**Do you see some red dots? What do you think they are?**

.....

.....

.....



Name ..... Date .....

---

**Draw and colour your celery stem and leaves.**



**Answer:** The celery stem has sucked up the water into its leaves. We know this has happened because the leaves are tinged with red. The red dots on the end of the stem are the ends of the tiny tubes inside the stem.