

# Lesson 19 - Biological Classifications

Throughout ORCA Lesson 19, we learnt that animals can be grouped together if they have similar characteristics, either by what they look like and/or their genetics. We looked at how to classify a **blue whale** and a **Cuvier's beaked whale**.

Can you **fill in the table below** to work out the classification for 4 other species of cetacean?

1. Narwhal
2. Harbour porpoise
3. Humpback whale
4. Northern bottlenose whale

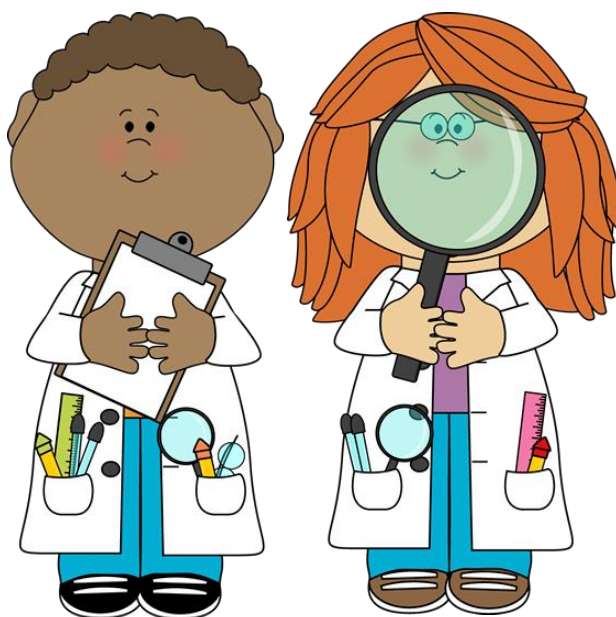
Biological Classification	Narwhal	Harbour porpoise	Humpback whale	Northern bottlenose whale
Domain	<i>Eukaryote</i>			
Kingdom		<i>Animal</i>		
Phylum			<i>Chordata</i>	
Class				<i>Mammal</i>
Order			<i>Cetacea</i>	
Suborder				<i>Odontocete</i>
Family		<i>Phocoenidae</i>		
Genus		<i>Phocoena</i>		
Species			<i>Humpback whale</i>	
Scientific name	<i>Monodon monoceros</i>			

Hint: Domain → Order will be the same for all cetaceans

Use this website for a helping hand:

<https://animaldiversity.org/accounts/Cetacea/classification/#Cetacea>

Scroll to the bottom of the page where you can see cetaceans and then click on baleen whale or toothed whale and go from there!



Looking out for  
Whales and Dolphins

[orcaweb.org.uk](http://orcaweb.org.uk)