



Year 2

Comprehension

Microhabitats



Useful words

apartment

predators

amphibians



Microhabitats

A habitat is the place where an animal or plant chooses to make its home. This might include a woodland, a desert, the ocean or the rainforest. Lots of different animals live in every habitat, because they rely on each other for things such as food.



In every habitat, there are lots of microhabitats. For example, you might live in a town. That would be your habitat. If you live in an apartment, then the apartment is your microhabitat!

This booklet will help you find out about some of the microhabitats you might come across in a woodland...

Questions

1. Tick **three** examples of habitats.

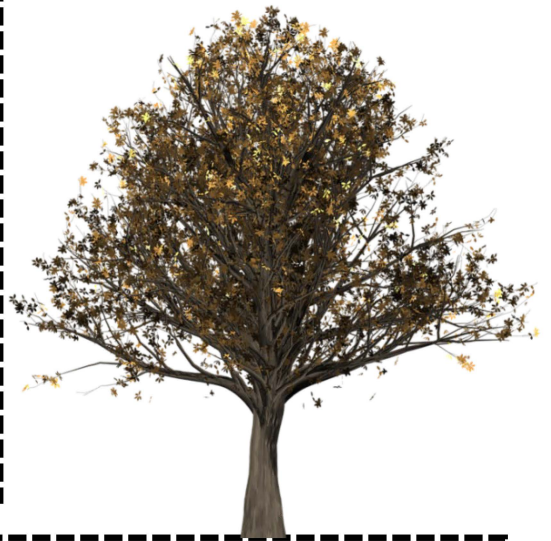
Apartment	<input type="checkbox"/>	Woodland	<input type="checkbox"/>
Ocean	<input type="checkbox"/>	Rainforest	<input type="checkbox"/>

2. Why do lots of animals live in one habitat?

A tree

What lives on a tree?

- You might find some birds' nests or holes up the top of a tree, providing shelter to robins, wrens, owls or woodpeckers.
- Living beneath the bark, you are likely to discover woodlice feasting on the dead, damp wood.
- Making their homes on the leaves might be mites, moths or caterpillars.



How can I explore it?

- Use binoculars to peer up the top. (Make sure you wait patiently and quietly!)
- Very gently pull off a tiny piece of loose bark.
- Sweep a net through the leaves and see what you find in your net.

Questions

3. Write 3 birds you might find living on the top of a tree.

4. On which part of the tree will you find a mite?

5. Find and copy one word meaning 'carefully.'

Leaf-Litter

What is it?

Have you ever noticed that the floor of a woodland is covered in leaves? In the autumn, the leaves fall off the trees and spend the rest of the year decomposing (rotting) on the ground. These leaves are the perfect home for a wide selection of mini-beasts!



How can I explore it?

- Ask your teacher to take you somewhere you will find lots of leaves.
- Use a paintbrush to hunt gently through the leaves and brush any creatures into jars.
- Or collect a pile of leaves and spread them out on large white paper to see what scurries across the sheet!



What will I find?

You might discover beetles, slugs, snails, centipedes, millipedes, earwigs, caterpillars and many more!



Questions

6. What does 'decomposing' mean?

7. What will you need to take with you to help you look in the leaf litter? **Tick three.**

Paintbrush

☐

Jars

☐

White paper

☐

Spade

☐

8. Find and copy one word meaning 'runs.'

Under a Log

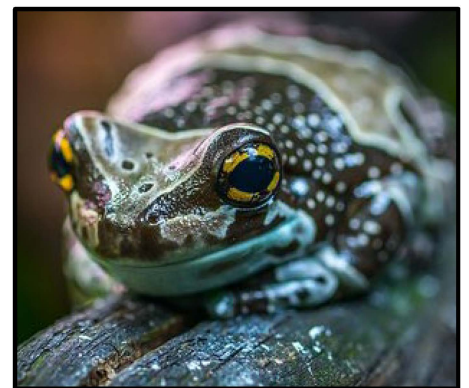


How can I explore it?

- Make sure you take some grown-ups with you.
- Choose small logs and gently roll them over.
- Collect some of the mini-beasts by brushing them into a pot.
- Don't forget to put them back before you roll the log back down!
- Ask a grown-up to help you move larger logs.

What will I find?

A surprising number of creatures like to live underneath logs, where it is very damp. There is lots of dead wood and other insects to eat and it is a perfect spot to hide from predators. You might find millipedes, slugs, snails or even amphibians, like frogs!



Questions

9. Who should you take with you to hunt under logs?

10. Why do you think you need to choose **small** logs?

11. Why do some creatures choose to make their home under logs? **Write two** reasons.

Thank you for purchasing this resource from our shop. If you have any questions, comments, or requests please do email us at: blossomingminds@hotmail.com.

You can see more of our products on the TES - <https://www.tes.com/teaching-resources/shop/blossomingminds>

Find us on



Blossoming Minds Teaching Resources Terms of Use

Permission granted to the purchaser of this resource to reproduce for personal and educational use only. Reproduction, distribution and lending for use by additional teachers, staff or educational providers is prohibited. Commercial copying, hiring and lending is prohibited. No part of this publication may be reproduced, distributed or transmitted without the written permission of the author. Posting in whole or in part on the internet in any form including on classroom/personal websites or network drives, is prohibited. We retain the copyright, and reserve all rights to this product.

You may:

- use and copy this resource for your own classroom or for your own personal use.
- pin, review or refer to this resource in blog posts, at seminars, professional development, workshops, or other similar venues, provided you link back to our shop and credit us as the author.

You may not:

- sell this resource or any part of it.
- share or copy this resource for others, including but not limited to, other teachers, staff or educational providers.
- email this resource to others.
- post this resource or any part of it online, including on a personal, classroom or school website.
- claim this work as your own.

All images are courtesy of:

www.pixabay.com